

STAR & RAINBOW



STAR AND RAINBOW TENTS

Who has never experienced the splendour of the circus? The circus evokes memories in practically every one of sparkling shows. The magic, the ambience, the pomp and circumstance that mark the circus of yesteryear, are today as real as ever under De Boer Circus tents.

De Boer has three different circus tents available, each of which perfectly match the space at hand and the number of spectators concerned. The lay- out of all three types is flexible.

THE THREE CIRCUS TENTS

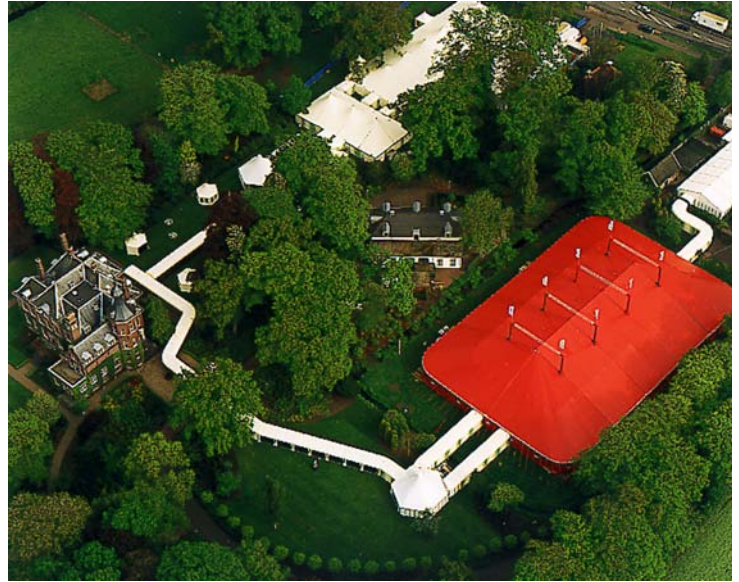
The oval Circus tent measures 36 by 46 metres and comes in blue and white canvas decorated on the inside with red, white and blue stripes. This circus tent can be combined easily with other De Boer structures. De Boer actually has the largest circus tent in Europe: the monumental Star Show Tent, with an area of 5100 m². Thousands of spectators can be accommodated comfortably. The basic dimensions are 44 by 44 metres. The Star Show Tent can be extended with successive sections of 12 metres. The use of a circus tent evokes memories in the spectator of the glory of the circus, which modified now with every comfort and the most up- to- date facilities, lives again in the circus tent of De Boer. With their generous size and atmosphere they are the right décor and accommodation for parties, festivals, pop concerts, TV shows and other large- scale events.

ERECTED IN RECORD TIME

The almost legendary talent in event management of De Boer and the company's impeccable logistical support guarantee a perfectly operational accommodation, if it is necessary even within 48 hours. The show after all must go on. Any one looking for last- minute solutions, creative capacity and a talent for improvisation, never goes home empty- handed from De Boer.

THE COLOURFUL RAINBOW TENT

An attractive variation of the Circus tent is the Rainbow tent, developed entirely with De Boer resources, with its unmistakable multicoloured exterior. The main characteristic of the Rainbow tent is its flexibility of size and lay- out. The permanent width is 33 metres and it can be extended with successive segments of 8 metres.



COMFORTABLE, NATURAL VENTILATION

The Circus tents and Rainbow tent have a peak ventilation system for draught free air circulation. Warm air and smoke leave the tent through the peak. This action draws in fresh air from outside.

DESIGNED FOR QUALITY AND SAFETY

Typical of all De Boer accommodation is the soundness and safety of all the materials and structures used. Structures meet stringent European requirements, including the German DIN standards. All materials meet the highest European standards for fire safety. All structures are wind tested. In this way De Boer ensures not only stylish accommodation but carefree hospitality as well.

De Boer International B.V.
Laanenderweg 11 1812 PW
P.O.Box 446 1800 AK Alkmaar
The Netherlands

Phone +31 (0) 72 750 11 00
Fax +31 (0) 72 750 11 99
<http://www.deboer.com>
international@deboer.com

Specifications may be altered without notification.
Copyright by De Boer International B.V..

STAR AND RAINBOW TENTS



DSM GELEEN

DE BOER COVERS ALL

STAR AND RAINBOW TENTS

STAR SHOW TENT 44M

The largest circus tent in Europe, made famous by the Willem Ruis Star Show

Made of fabric which is bright red on the outside and blue on the inside

Decorated with characteristics stars

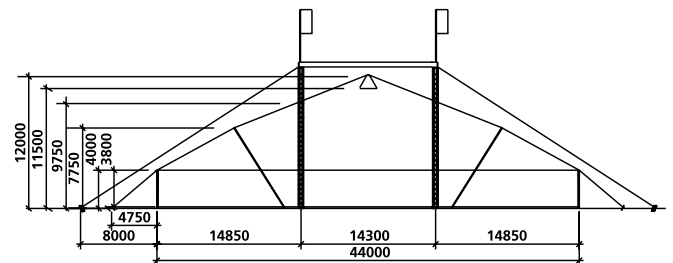
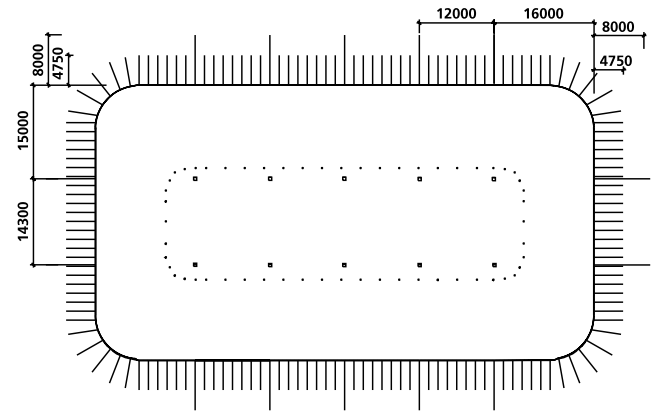
The Star Tent can be extended with sections of 12m

Roof covers are light- proof

Structures available	With and without system floor
Maximum bearing capacity, floor	500kg/m ²
Connection with other DB structures with Walkway	Yes
Connection to buildings only with Walkway	Yes
Awning available	No
Wall lining/swags and pelmets available	No
Installation options for:	
- smoked glass windows/ doors	No

TECHNICAL SPECIFICATIONS

Side wall height	4.000
Overall height	12.000
Wind load	0,50KN/m ²
Snow load	0KN/m ²
Pole	Diam 410
Roof tensioning system	Ratchet
Performance calculations	Yes
German T.U.V. assessor	Yes
Valid assembly manual	Yes



STAR AND RAINBOW TENTS

RAINBOW TENT 33M

SIDE FABRIC AND ROOF COVERS (SLIGHTLY OPAQUE)

Blue, red and yellow stripes or red, orange and yellow stripes

The Rainbow tent can be extended with 8 metre sections

Structures available	With and without system floor
Maximum bearing capacity, floor	500kg/m ²
Connection with other DB structures with walkway	Yes
Connection to buildings only with Walkway	Yes
Awning available	No
Wall lining/swags and pelmets available	No
Installation options for:	
- smoked glass windows/ doors	No

TECHNICAL SPECIFICATIONS

Incline of roof	Membrane
Side wall height	3.500
Overall height	10.500
Wind load	0,50KN/m ²
Snow load	0KN/m ²
Pole	Diam 130
Roof tensioning system	Ratchet
Performance calculations	Yes
German T.U.V. assessor	Yes
Valid assembly manual	Yes

