

PANORAMA DOME



PANORAMA DOME™

The assignment was a challenge in itself: create a temporary structure with the comfort of a permanent building and the flexibility of a tent. The solution is the Panorama Dome: combining state-of-the-art technology and innovative design.

THE NEXT STEP IN TEMPORARY STRUCTURES DESIGN

An exclusive pavilion, a top-class accommodation that can be erected anywhere and is suitable for parties, product launches or as a temporary art gallery. It can also be used as a temporary representative conference centre or office space. The latest addition to De Boer's impressive range of temporary structures: "The Panorama Dome".

FLEXIBLE LAYOUT OFFERS UNIQUE OPPORTUNITIES

The basic dimensions of the Panorama Dome are based on its round shape with a diameter of 20 meters, a side height of 4 meters with a central height of 6.0 meters. The surface can be extended by adding rectangular parts of 5 x 20 meters. In this way, a maximum of 4 additional elements can be included to enlarge the structure, which leads to an available surface area ranging from 314 m² (basic form) up to 714 m².

A WIDE RANGE OF ACCOMMODATION OPPORTUNITIES

Based on its shape and design the Panorama Dome can be used for conferences up to 700 persons, with fully incorporated facilities such as refreshment areas. The Panorama Dome also offers excellent facilities for exclusive promotion tours, hospitality functions or exhibitions. The design and construction make this pavilion also suitable for very representative temporary stores or offices.

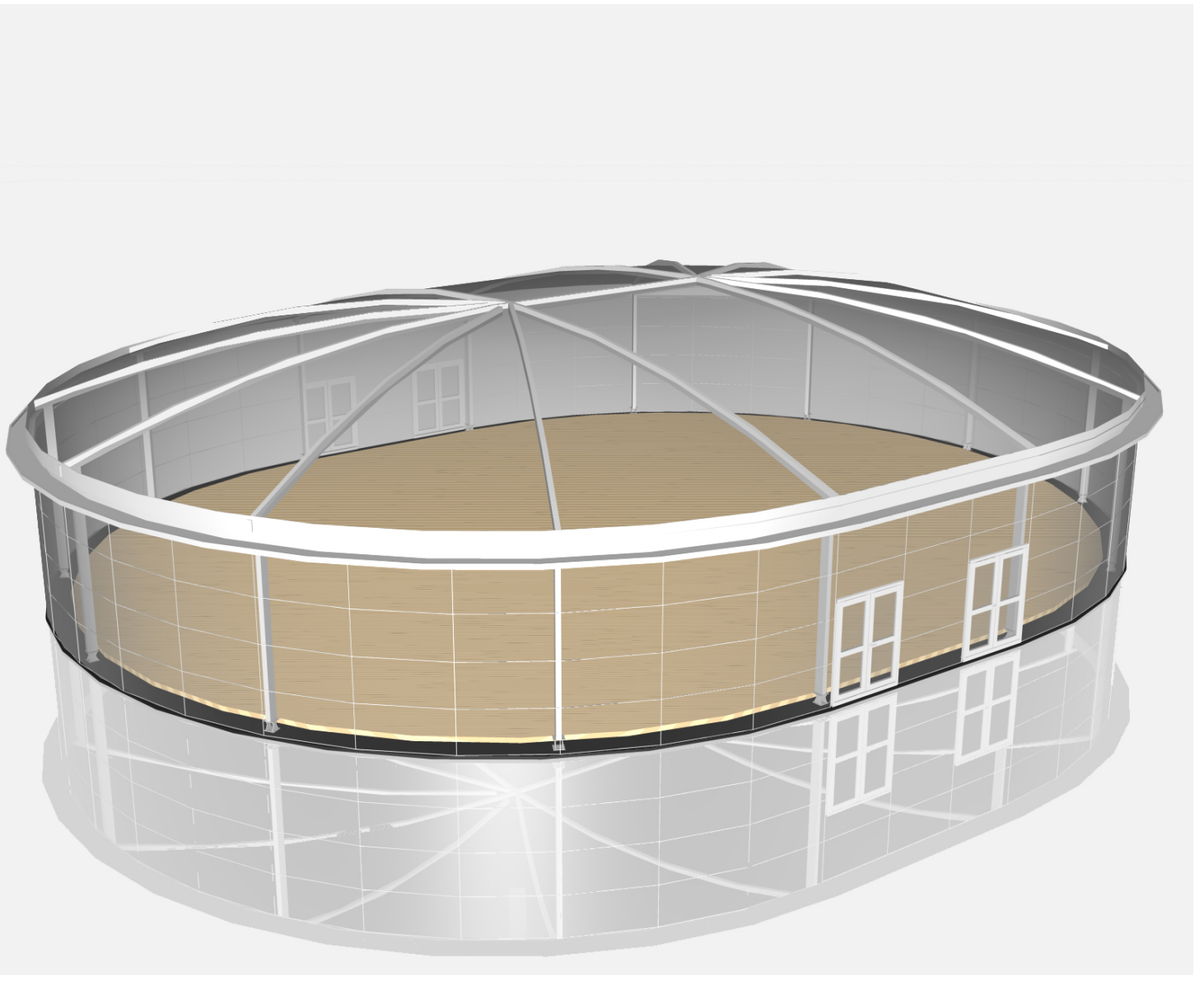


De Boer
Laanenderweg 11
P.O.Box 446 1800 AK Alkmaar
The Netherlands

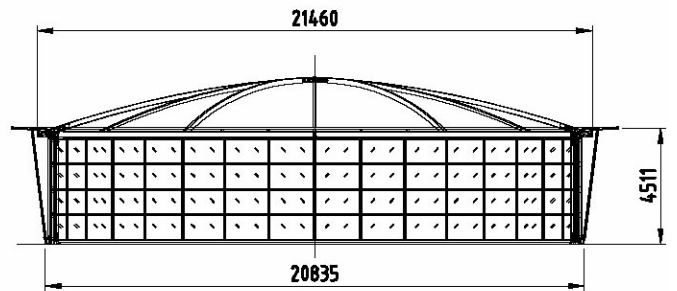
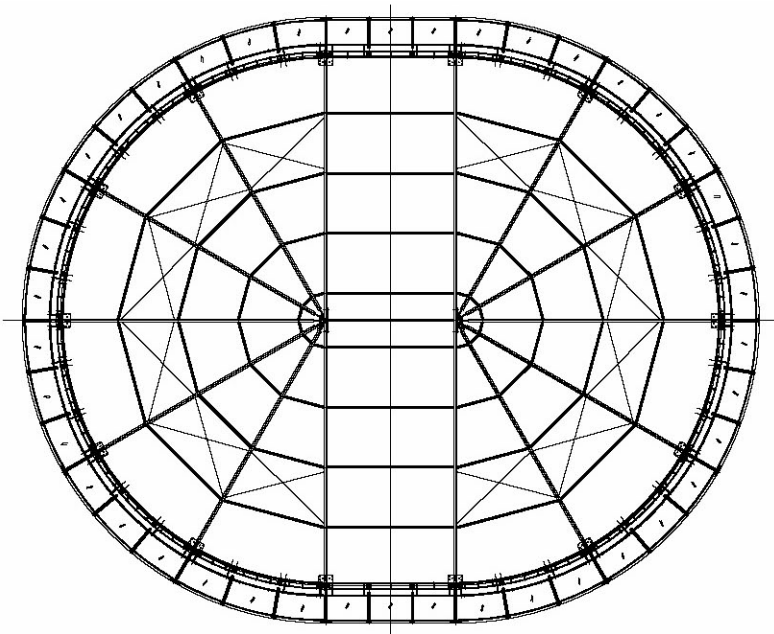
Phone +31 (0) 72 750 11 00
Fax +31 (0) 72 750 11 99
www.deboer.com
international@deboer.com

Specifications may be altered without notification.
Copyright by De Boer .

PANORAMA DOME™



PANORAMA DOME™



Panorama Dome

DIMENSIONS - SIZE

- Diameter	20.0 meters
- Side height	4.0 meters
- Central height	6.0 meters
- Door dimensions	1.75 x 2.20 meters

DIMENSIONS - EXTENSIONS

- Up to 4 rectangular parts
- Additional doors can be installed along the length of the extended structure

SITE SPECIFICATIONS

- Site conditions	the site must be completely levelled, maximum slope of the site is 2%
- Building place	minimum size of the site must be 24 x 24 meters

TECHNICAL QUALIFICATIONS - FRAME

- 12 aluminium portal frames connected on a central node in case of round structure
- 3 rows of purlins

TECHNICAL QUALIFICATIONS - FLOOR

- flooring system consists of antislip cassettes
--

TECHNICAL QUALIFICATIONS - FACADE

- laminated glass

TECHNICAL QUALIFICATIONS - ROOF COVER

- Fabric: silver grey opaque PVC
- 12 separate panels from a full circle

TECHNICAL QUALIFICATIONS - BUILDING CERTIFICATES

- German DIN 4112 RW TUV
- French CTS Norms

Snow load	0.1 KN/m ²
Windload	0.5 KN/m ²