

# JUMBO



## JUMBO HALL

The name of this structure gives it away: it is gigantic! Its enormous clear span of 30, 40 or 50m allows the erection of a structure the size of a complete stadium. The standard wall height is 4m. The apex height varies from 8 to no less than 12m. The Jumbo can accommodate every event in the utmost comfort. Like the Alu Halls, the Jumbo has a patented roof-tensioning system, which prevents any annoying flapping of the roof covers.

### NUMEROUS LARGE-SCALE APPLICATIONS

De Boer Jumbo structures serve the most diverse purposes. These include use as a gigantic event hall, as an exhibition area or for the storage of goods. High quality roller shutter doors can be fitted in the front and rear façades, to create an extra high drive-in opening for trucks.

### COMFORTABLE

Through the use of the hard PVC side panels a comfortable area is created with perfect temperature control. The peaks of all Jumbo structures have a ventilation grid system, developed by De Boer, which effects natural ventilation. De Boer has a wide range of options for lining and furnishing the structure.

### CUCKOO FOR STILL BETTER VENTILATION

Another special De Boer development is the Cuckoo, which can be fitted to the roof of the Jumbo Hall. This is a raised ventilation grid that provides natural, enhanced extraction of air. This innovative and effective system ensures extra, draught-free air circulation and a delightfully comfortable climate.

### QUALITY AND SAFETY

Typical of all De Boer accommodation is the integrity and safety of all the materials and structures used. Structures meet stringent European requirements, including the German DIN standards. All materials meet the highest European standards for fire safety. All structures are wind tested. In this way De Boer ensures not only stylish accommodation but carefree hospitality as well.



De Boer International B.V.  
Laanenderweg 11 1812 PW  
P.O.Box 446 1800 AK Alkmaar  
The Netherlands

Phone +31 (0) 72 750 11 00  
Fax +31 (0) 72 750 11 99  
www.deboer.com  
international@deboer.com

Specifications may be altered without notification.  
Copyright by De Boer International B.V..

# JUMBO HALL



DE BOER COVERS ALL

## JUMBO HALL

### JUMBO PAVILION A 30/ 400/ 5

SIDE PANELS	ROOF COVERS	GABLE FABRIC
White	White	Blue
White	Blue	Blue
	(light- proof)	(light- proof)
White	White/ opaque (light- proof)	White/ opaque (light- proof)

If requested, the bearing capacity of the floor can be increased (plate floor 800/ 1000 kg and cassette floor 600/ 700 kg)

Structures available With and without system floor

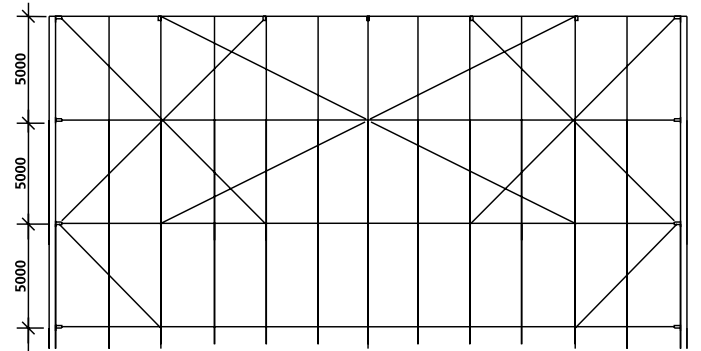
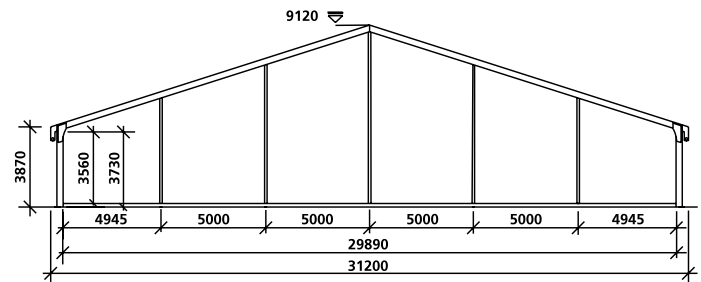
Maximum bearing capacity, floor	500kg/m <sup>2</sup>
Connection with other DB structures	Yes
Connection to buildings	Yes
Light- proof fabric available	Yes
Awning available	Yes
Wall lining/swags and pelmets available	Yes
Optional replacement of wall bracing	No
Roof ventilation (cuckoo) available	Yes
Separation fabric, 30m available	No

Installation options for:

- Luxury synthetic door	Yes
- Luxury pushbar/glass door	Yes
- Arched windows	Yes
- Side curtains	Yes
- Locking door	Yes
- Emergency door	Yes

#### TECHNICAL SPECIFICATIONS

Incline of roof	18°
Side wall height	3.870
Overall height	9.120
Wind load	0,50KN/m <sup>2</sup>
Snow load	0KN/m <sup>2</sup>
Truss profile	120*300
Roof tensioning system	Unique roll-up system
Roof overhang	Yes
Performance calculations	Yes
German T.U.V. assessor	Yes
Valid assembly manual	Yes



# JUMBO HALL

## JUMBO PAVILION A 40/ 400/ 5

SIDE PANELS	ROOF COVERS	GABLE FABRIC
White	White	Blue
White	White/ opaque (light- proof)	White/ opaque (light- proof)

If requested, the bearing capacity of the floor can be increased (plate floor 800/ 1000 kg and cassette floor 600/ 700 kg)

Structures available With and without system floor

Maximum bearing capacity, floor 500kg/m<sup>2</sup>

Connection with other DB structures Yes

Connection to buildings Yes

Light- proof fabric available Yes

Awning available Yes

Wall lining/swags and pelmets available Yes

Optional replacement of wall bracing No

Roof ventilation (cuckoo) available Yes

Separation fabric, 40m available Yes

Installation options for:

- Luxury synthetic door Yes

- Luxury pushbar/glass door Yes

- Arched windows Yes

- Side curtains Yes

- Locking door Yes

- Emergency door Yes

### TECHNICAL SPECIFICATIONS

Incline of roof 18°

Side wall height 3.870

Overall height 10.690

Wind load 0,50KN/m<sup>2</sup>

Snow load 0KN/m<sup>2</sup>

Truss profile 120\*300

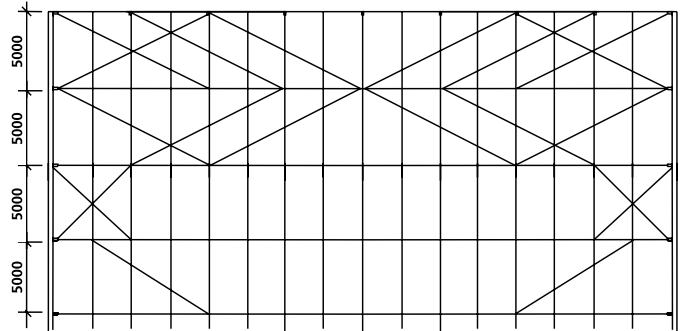
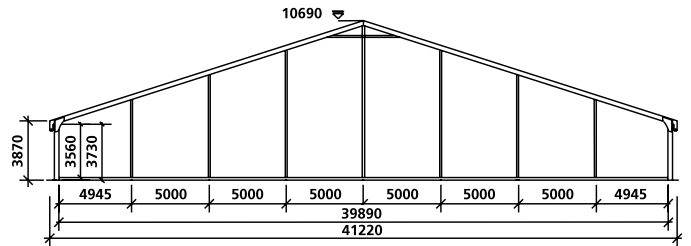
Roof tensioning system Unique roll-up system

Roof overhang Yes

Performance calculations Yes

German T.U.V. assessor Yes

Valid assembly manual Yes



## JUMBO HALL

### JUMBO PAVILION A 50/ 400/ 5

SIDE PANELS	ROOF COVERS	GABLE FABRIC
White	White	Blue
White	White/ opaque (light- proof)	White/ opaque (light- proof)

If requested, the bearing capacity of the floor can be increased (plate floor 800/ 1000 kg and cassette floor 600/ 700 kg)

Structures available With and without system floor

Maximum bearing capacity, floor 500kg/m<sup>2</sup>

Connection with other DB structures Yes

Connection to buildings Yes

Light- proof fabric available Yes

Awning available Yes

Wall lining/swags and pelmets available Yes

Optional replacement of wall bracing No

Roof ventilation (cuckoo) available Yes

Separation fabric, 50m available No

Installation options for:

- Luxury synthetic door Yes

- Luxury pushbar/glass door Yes

- Arched windows Yes

- Side curtains Yes

- Locking door Yes

- Emergency door Yes

#### TECHNICAL SPECIFICATIONS

Incline of roof 18°

Side wall height 3.870

Overall height 12.260

Wind load 0,50KN/m<sup>2</sup>

Snow load 0KN/m<sup>2</sup>

Truss profile 120\*300

Roof tensioning system Unique roll-up system

Roof overhang Yes

Performance calculations Yes

German T.U.V. assessor Yes

Valid assembly manual Yes

